

ST. LOUIS, MISSOURI

AL-5910 (FAA)

# RNAV (GPS) RWY 34

ST. LOUIS/CREVE COEUR (1H0)

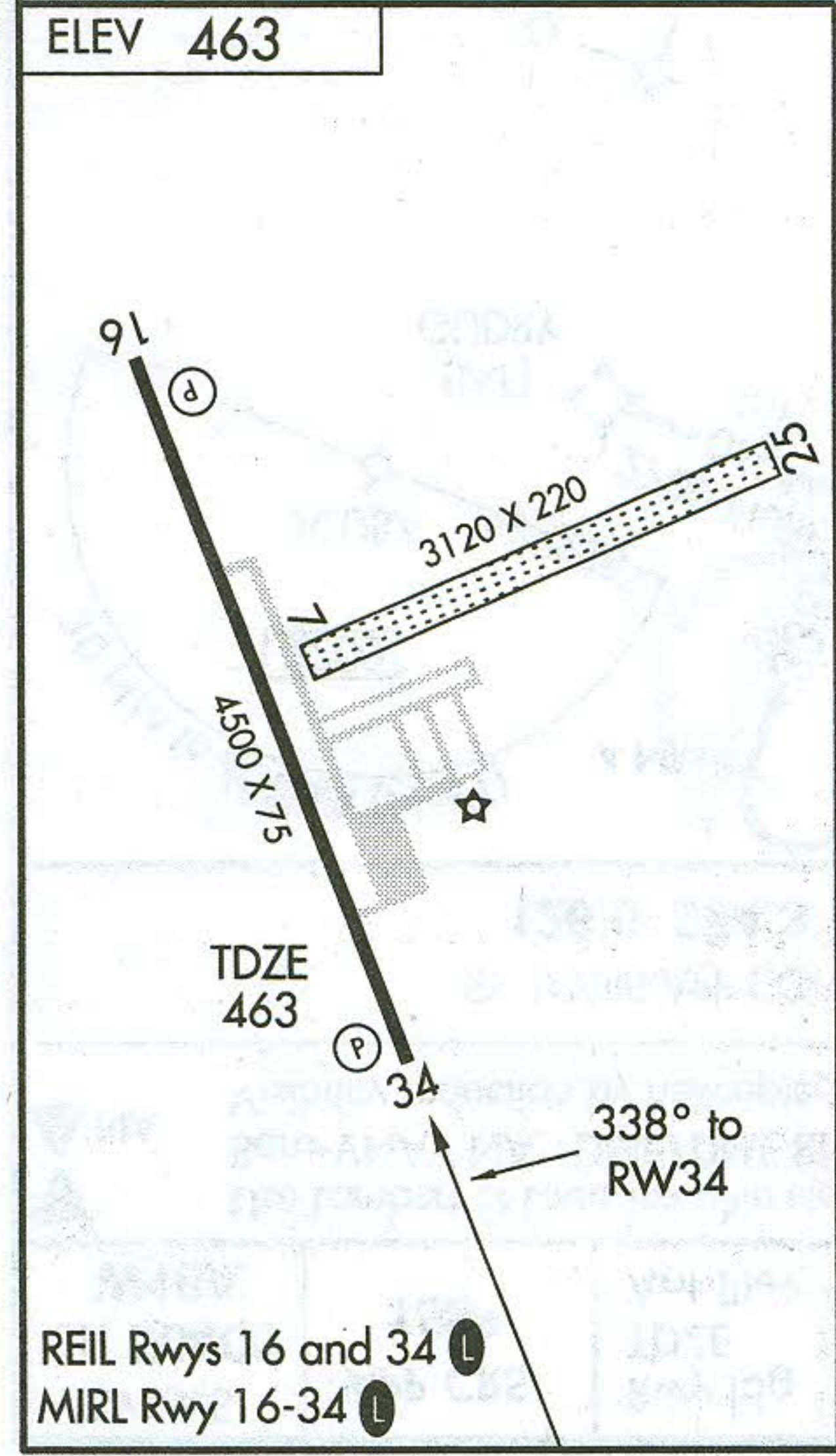
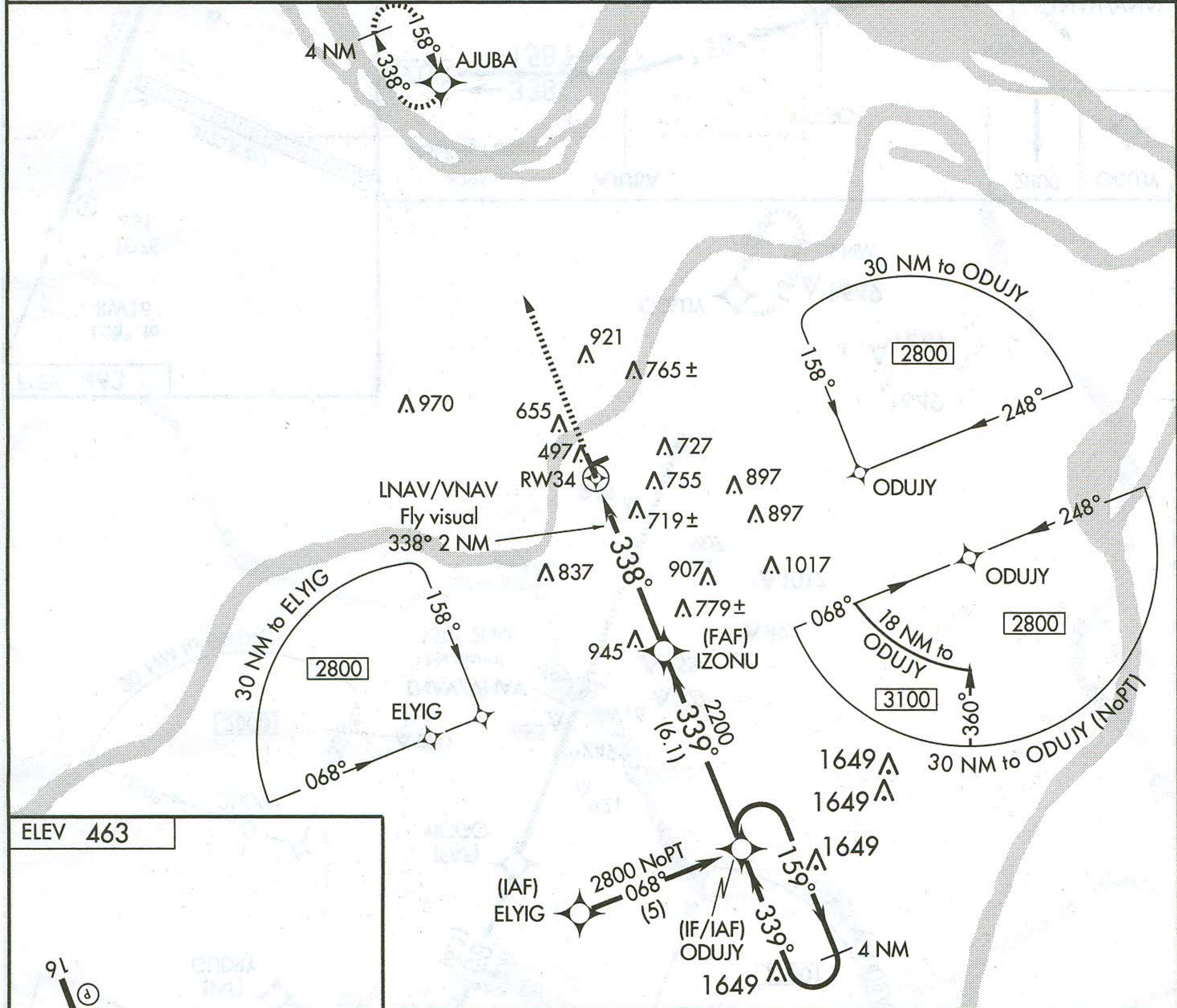
WAAS CH <b>93905</b> <b>W34A</b>	APP CRS <b>338°</b>	Rwy ldg TDZE Apt Elev	<b>4500</b> <b>463</b> <b>463</b>
----------------------------------------	------------------------	-----------------------------	-----------------------------------------

▼ Use Lambert-St Louis Intl altimeter setting.  
 ▲ NA Baro-VNAV NA. DME/DME RNP-0.3 NA.  
 Visibility reduction by helicopters NA.

MISSED APPROACH: Climb to 2700 direct AJUBA and hold.

ST. LOUIS APP CON  
**126.5 254.3**

UNICOM  
**122.8 (CTAF)**



2700	AJUBA	VGSI and RNAV glidepath not coincident.	ODUJY	4 NM Holding Pattern
	RW34		IZONU	2800
	LNNAV/VNAV Fly visual 338° 2 NM			GS 3.00° TCH 30
		5.3 NM	6.1 NM	
CATEGORY	A	B	C	D
LPV DA	809-1¼	346 (400-1¼)		NA
LNNAV/VNAV DA	1131-2	668 (700-2)		NA
LNNAV MDA	1080-1	617 (700-1)		NA
CIRCLING	1080-1	617 (700-1)		NA

ST. LOUIS, MISSOURI  
Amdt 1 07354

38°44'N - 90°30'W

ST. LOUIS/CREVE COEUR (1H0)  
RNAV (GPS) RWY 34

NC-3, 23 SEP 2010 to 18 NOV 2010

NC-3, 23 SEP 2010 to 18 NOV 2010