

# RNAV (GPS) RWY 16

ST. LOUIS/CREVE COEUR (1H0)

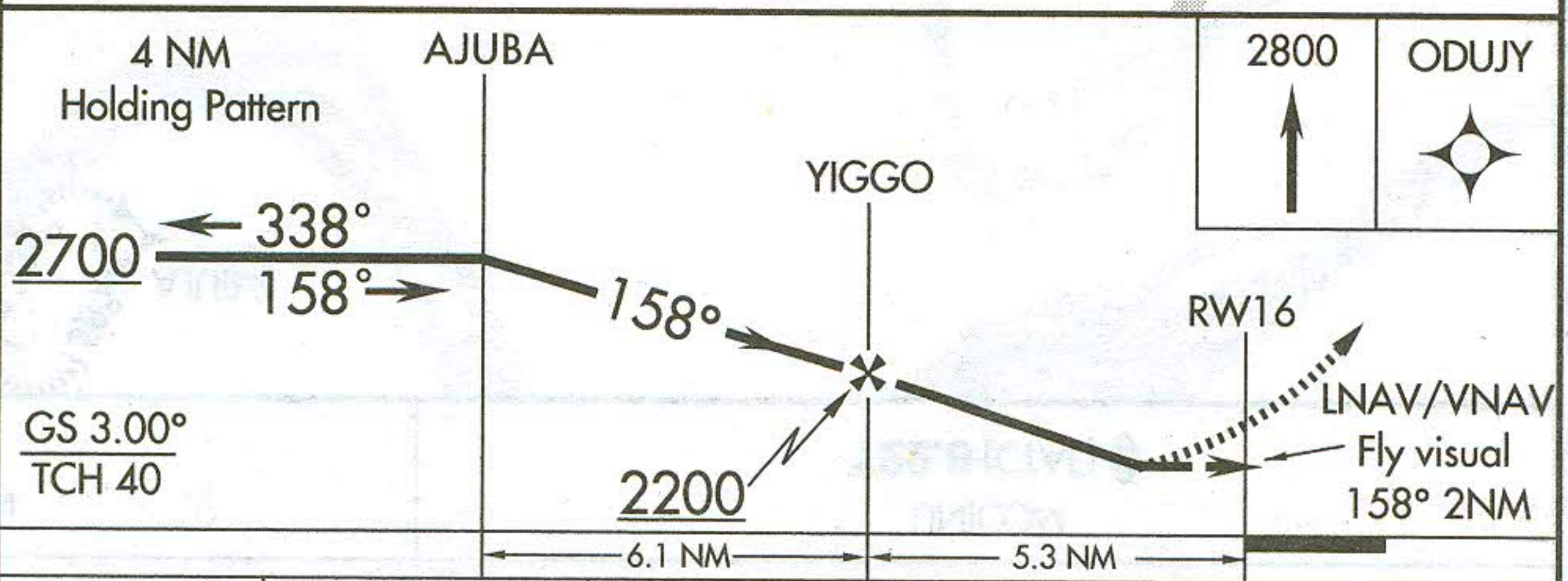
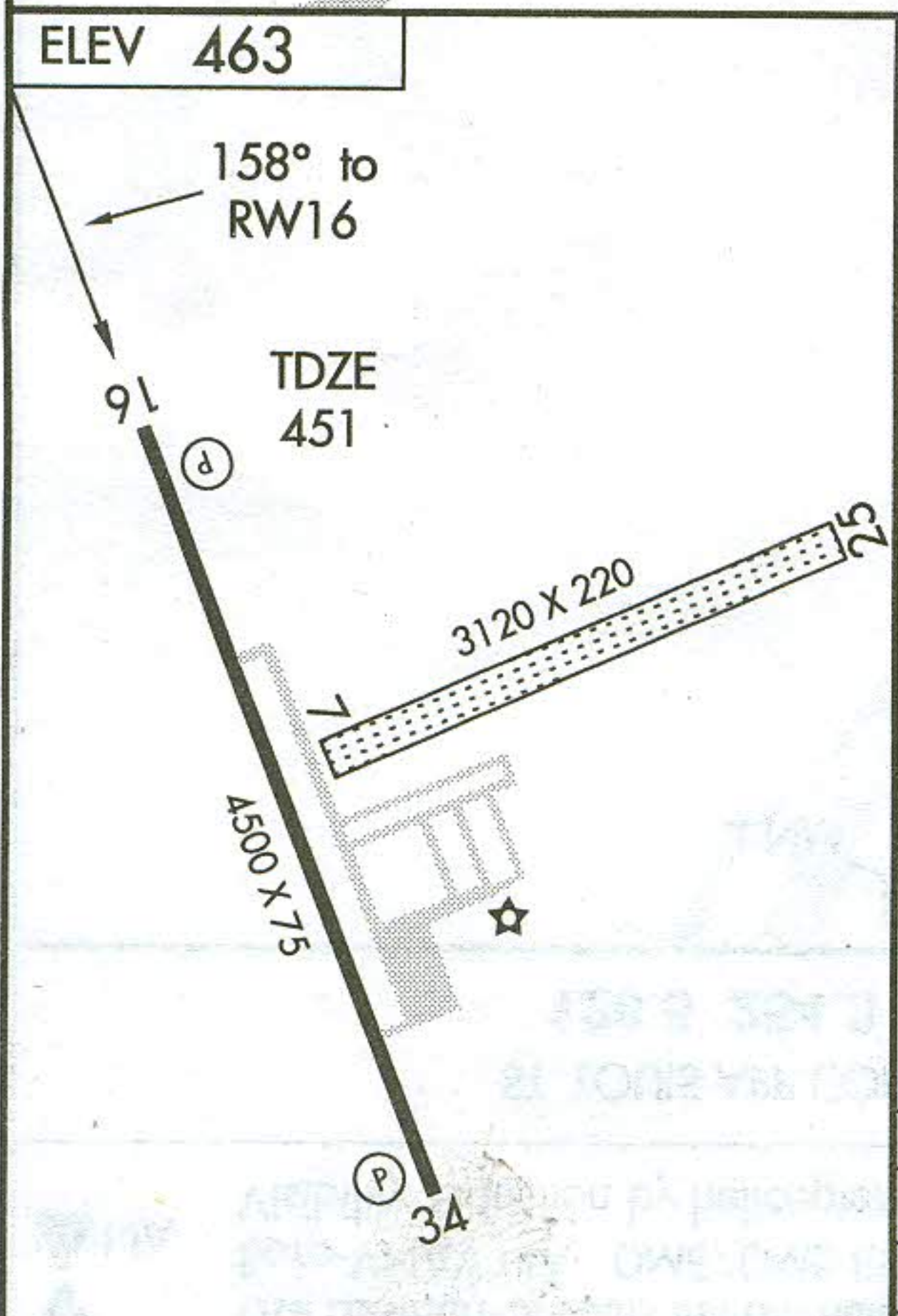
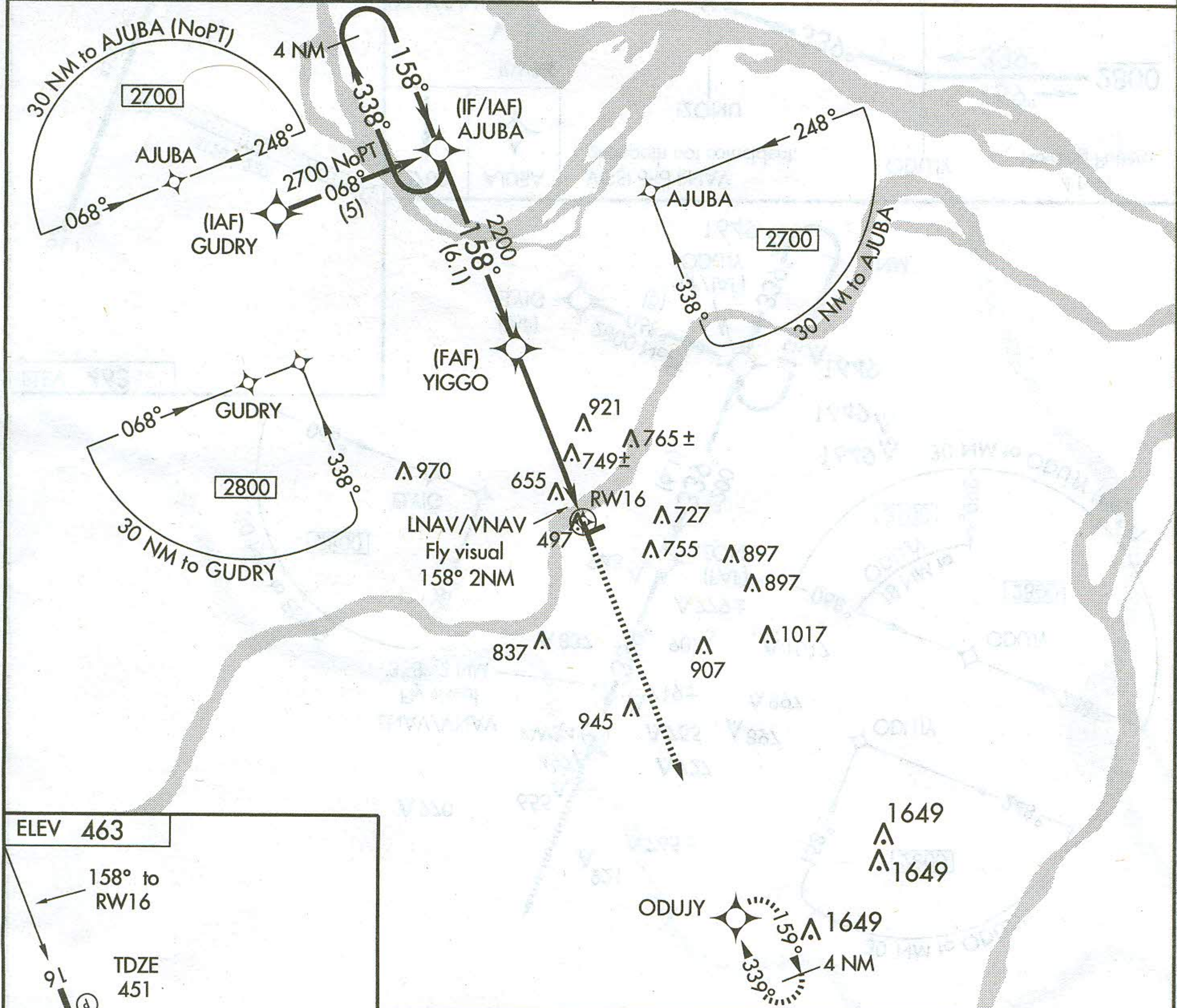
WAAS CH 50403 W16A	APP CRS 158°	Rwy Idg 4500
		TDZE 451
		Apt Elev 463

Use Lambert-St Louis Intl altimeter setting.  
Baro-VNAV NA. DME/DME RNP-0.3 NA.  
Visibility reduction by helicopters NA.

MISSED APPROACH: Climb to 2800 direct ODUJY and hold.

ST. LOUIS APP CON  
126.5 254.3

UNICOM  
122.8 (CTAF)



CATEGORY	A	B	C	D
LPV DA	912-1 <sup>3</sup> / <sub>4</sub> 461 (500-1 <sup>3</sup> / <sub>4</sub> )			NA
LNAV/VNAV DA	1130-2 679 (700-2)			NA
LNAV MDA	1160-1 709 (700-1)			NA
CIRCLING	1160-1 697 (700-1)			NA

ST. LOUIS, MISSOURI  
Amdt 1 07354

38°44'N - 90°30'W  
519

# RNAV (GPS) RWY 16

ST. LOUIS/CREVE COEUR (1H0)

NC-3, 23 SEP 2010 to 18 NOV 2010

NC-3, 23 SEP 2010 to 18 NOV 2010