

ST. LOUIS, MISSOURI

AL-5910 (FAA)

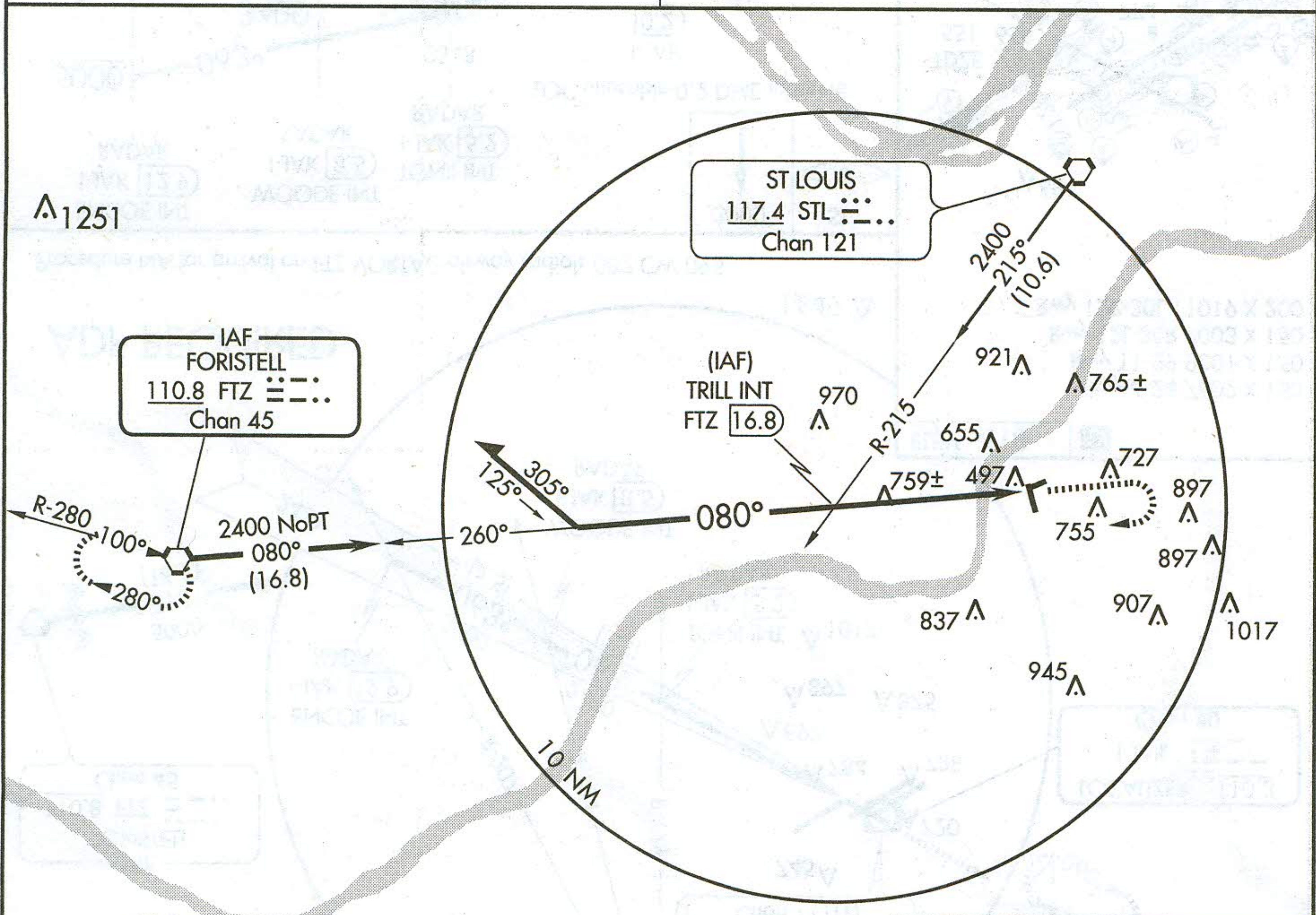
VORTAC FTZ 110.8 Chan 45	APP CRS 080°	Rwy Idg TDZE Apt Elev	N/A N/A 451
---------------------------------------	------------------------	-----------------------------	--

VOR-A
ST. LOUIS/CREVE COEUR (1H0)

▲ NA Use Lambert-St. Louis Intl altimeter setting. MISSED APPROACH: Climb to 1200 then climbing right turn to 2400 direct FTZ VORTAC and hold.

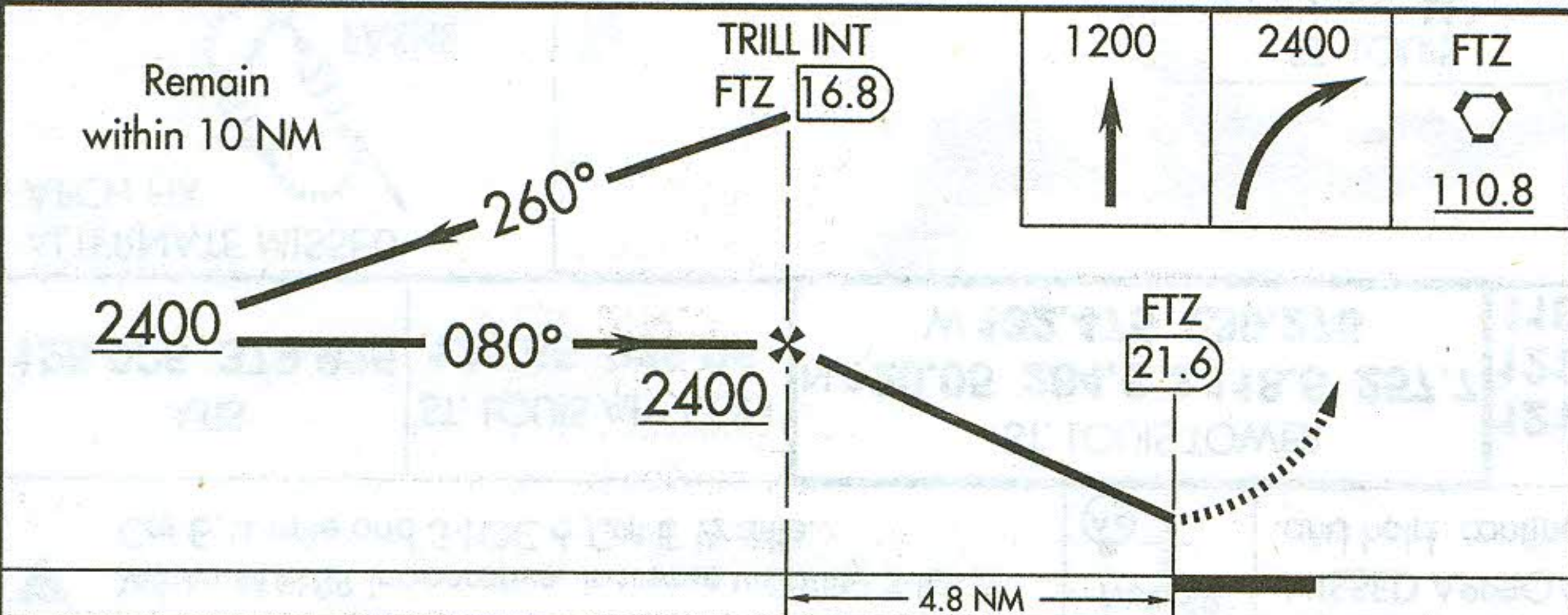
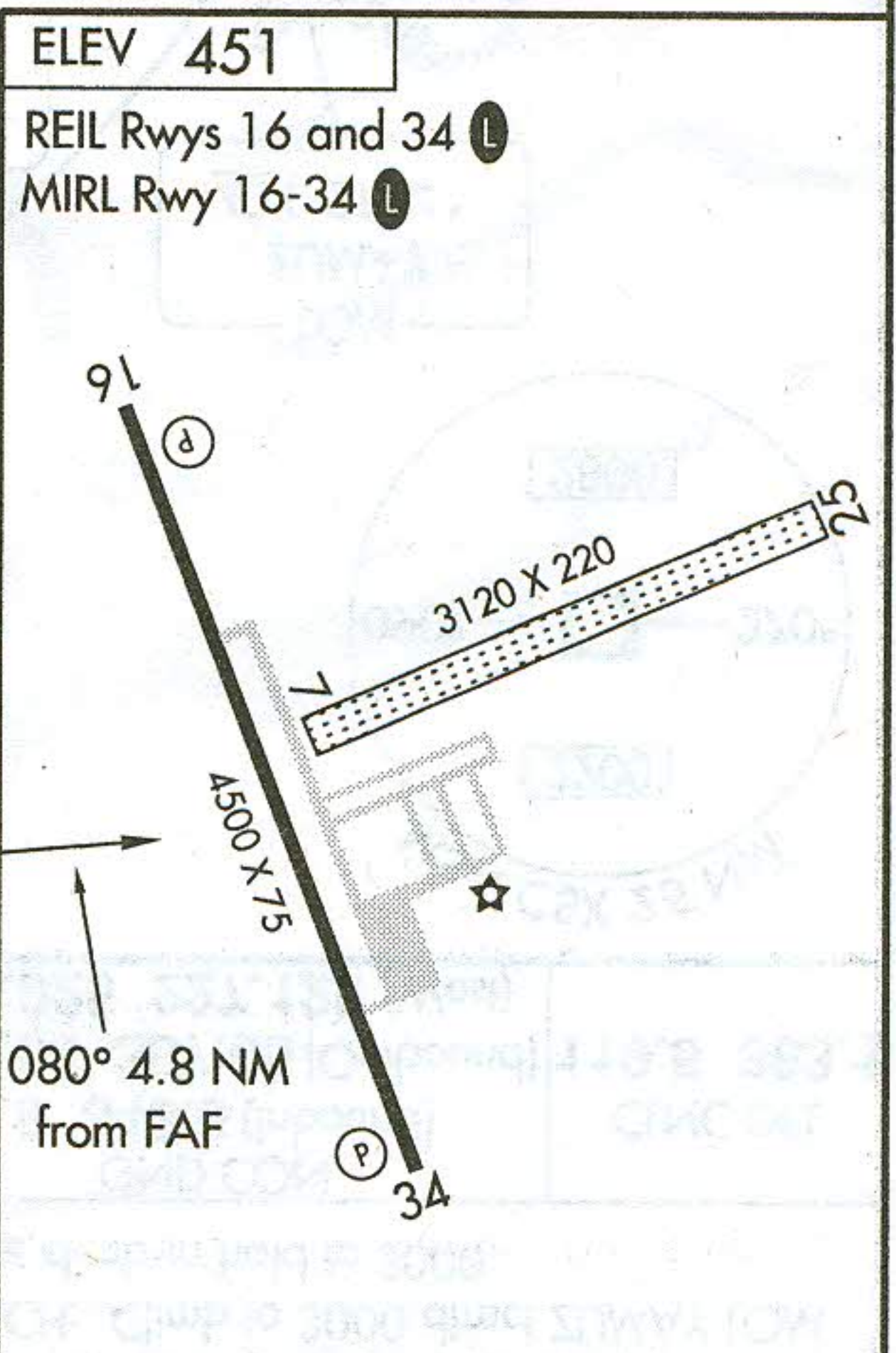
ST. LOUIS APP CON
126.5 254.3

UNICOM
122.8 (CTAF)



NC-3, 23 SEP 2010 to 18 NOV 2010

NC-3, 23 SEP 2010 to 18 NOV 2010



CATEGORY	A	B	C	D
CIRCLING	1060-1 609 (700-1)	1080-1¼ 629 (700-1¼)	NA	

FAF to MAP 4.8 NM					
Knots	60	90	120	150	180
Min:Sec	4:48	3:12	2:24	1:55	1:36

ST. LOUIS, MISSOURI
Amdt 5 08325

38°44'N-90°30'W
521

ST. LOUIS/CREVE COEUR (1H0)
VOR-A